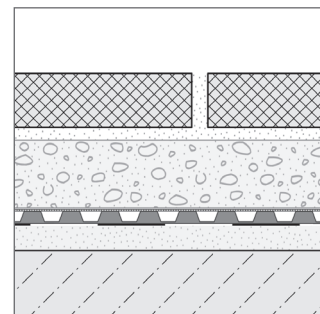


DURABASE DR 80

1/2

Mat for drainage of ceramic coverings in outdoor areas

- Installation instructions -



GENERAL:

Please refer to our product information DURABASE DR 80, which you can find on the Internet at www.dural.de. In general, the generally recognised rules of technology must be observed!

The following applies to all products/materials: The suitability for use with regard to mechanical and the following applies to all products/materials: The usability with regard to mechanical and chemical loads must be carefully checked in each individual case before installation. Protect material from prolonged exposure to sunlight.

PREPARATION:

The covering construction on the mat can be composed in very different ways.

For example, constructions with screed in combination with tiles or slabs as the top covering are possible, as well as constructions with gravel or chippings.

Prerequisites are a structural waterproofing adapted to the requirements of the object, e.g. with DURABASE WP++ and a slope of at least approx. 2 % for drainage of the waterproofing layer. Tiles cannot be laid directly on DURABASE DR using the thin-bed method, nor can they be laid directly.



DURAL GmbH

Südring 11

D-56412 Ruppach-Goldhausen

Tel. +49 (0) 2602/9261-0

Fax +49 (0) 2602/9261-50

info@dural.com

www.dural.com

Mat for drainage of ceramic coverings in outdoor areas

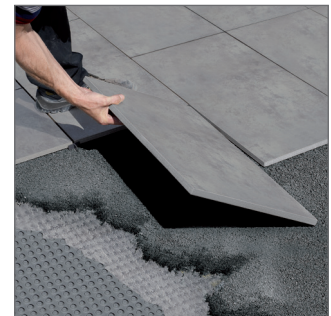
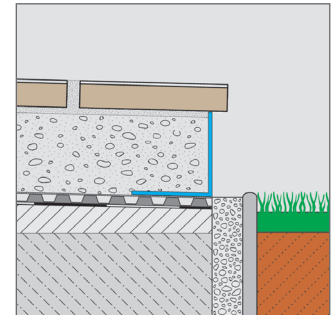
- Installation instructions -

PLACEMENT:

1. Cut the DURABASE DR 80 mat to fit exactly. Please note that the mat joints must be laid overlapping 3 stud rows.
2. The properly prepared substrate must be load-bearing, level and free of components that could damage the structural waterproofing. Any compensatory measures to achieve a sufficient slope must be taken before laying DURABASE DR 80. If necessary, aDRitional waterproofing is required to protect the levelling level. z. e.g. with DURABASE WP++.
3. Lay the cut-to-size sheets loosely on the structural waterproofing with the fleece facing upwards. Due to the evenly arranged drainage naps, the laying direction is irrelevant.
4. Join the mats together in a shear-resistant manner. To do this, pull the fleece up along the long side of the mat and press the DR 80 mat onto the previous mat in a width of 3 rows of studs.
5. If necessary, seal wall connections with Durabase WP++ sealing tape. In this case, the sealing tape is partially bonded to DURABASE DR 80 with flexible mortar and to the adjacent wall surface. For most substrates, a hydraulic-setting flexible mortar or fast-setting flexible adhesive in accordance with DIN EN 12004 / C2 can be used. Internal and external corners should be formed with the appropriate DURABASE Flex corner pieces.
6. Subsequently, the selected pavement construction is to be designed in accordance with the respective specific requirements and in accordance with the generally recognised rules of apply.
7. Frame free balcony edges with matching DURABAL balcony angle profiles.

NOTE:

The following applies to all products / materials: The usability with regard to mechanical and chemical loads must be carefully checked in each individual case before laying the mat. Protect the material from prolonged exposure to sunlight.



DURAL GmbH
Südring 11
D-56412 Ruppach-Goldhausen
Tel. +49 (0) 2602/9261-0
Fax +49 (0) 2602/9261-50
info@dural.com