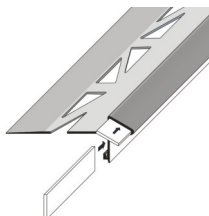
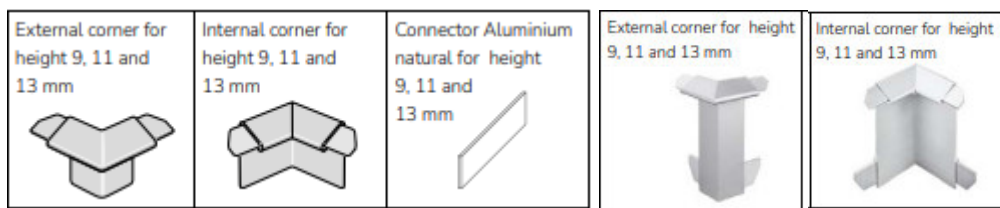
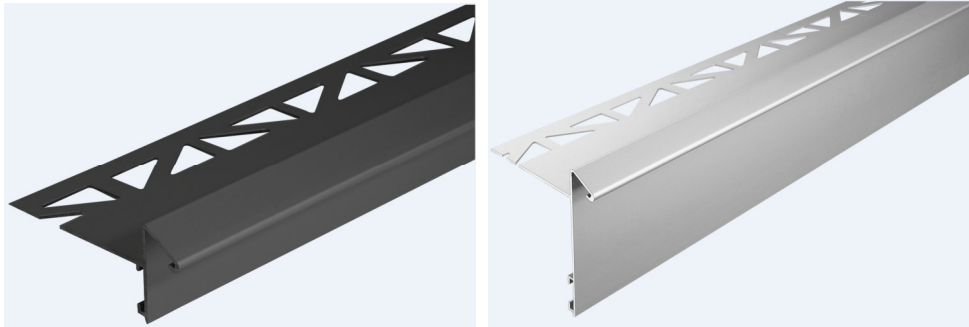


## TECHNICAL DATA SHEET

<b>Description</b>	Balcony angle profile with drip edge for installation in thin-bed mortar
<b>Reference</b>	Durabal BK
<b>Product-Group</b>	Balcony angle profile
<b>Material</b>	Aluminium
<b>Surface</b>	Anodised / power coated
<b>Color</b>	Silver / RAL 7016 anthracite
<b>Length</b>	300 cm
<b>High</b>	9 - 11 - 13 mm
<b>Cover height</b>	18 - 60 mm
<b>Accessories</b>	Internal corner - external corner - connector (aluminium natural)
<b>Use</b>	Outdoor
<b>Care / cleaning</b>	clear water, bathroom cleaners. No mechanical cleaning
<b>Drawing</b>	



## TECHNICAL DATA SHEET



### **Anodised aluminium**

Anodisation is a special finish that improves the look of aluminium profiles. The anodised surface is susceptible to scratches and may become faded, particularly due to the effect of alkaline building products. Contact with fresh cement can cause surface corrosion. Adhesive and grout should always be removed immediately from all visible surfaces using plenty of water. Once oxidation marks have been allowed to appear, it is practically impossible to remove them. Use only cleaning agents with neutral pH that do not scour. Make sure that good room ventilation is provided, especially when joining in combination with high-gloss anodised profiles, in order to achieve fast curing of the joints. This also reduces the alkaline potential of the cement (lowers the pH), thereby preventing any possible damage to the anodised surface.

### **Powder-coated aluminium**

This involves powder coating of aluminium using a special process. This is harder and stronger than other finishes. It is resistant to UV light as well as chemicals and weathering. Visible surfaces may be susceptible to scratches. Use only cleaning agents that do not scour.

### **Note**

The suitability for use in terms of mechanical and chemical resistance must always be checked in each individual case. When installing and grouting our metal profiles, the adhesive and grouting materials must be removed immediately with clean water and a soft sponge to prevent damage due to corrosion of the profile. Do not use acidic (e.g. cement fog remover) or alkaline cleaning agents in combination with all metal profiles. Clean with clean water and wipe with a dry linen cloth.