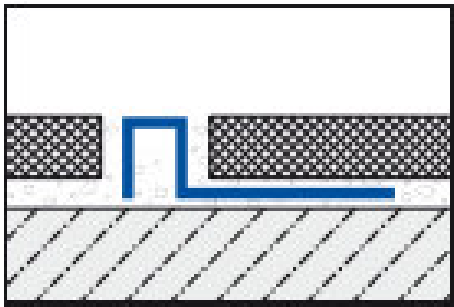
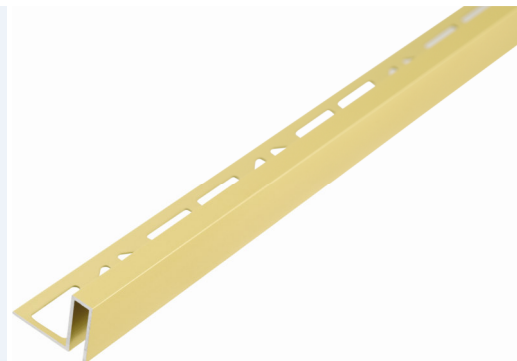
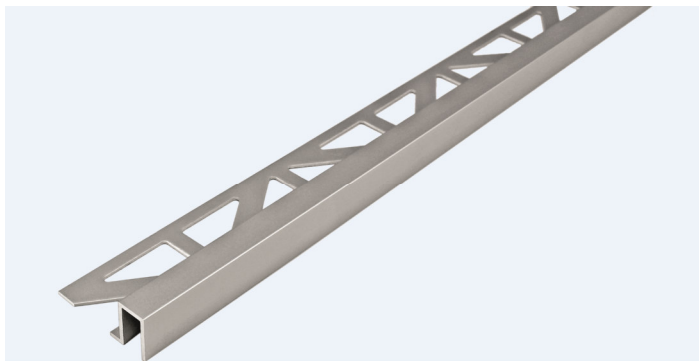


TECHNICAL DATA SHEET

DPAE

Description	Edge trim for walls and floors
Reference	DPAE 70 / DPAE 90 / DPAE 110 / DPAE 125 / DPAE 150 * / DPAE 200 * (*= discontinued item) DPAE 70-G / DPAE 90-G * / DPAE 110-G / DPAE 150-G * (*= discontinued item)
Material	Aluminium
Surface	Anodised
Color	Silver / Gold
Length	250 cm
High	7-9-11-12,5-15-20 mm
Visible width	8 mm
Accessories	Internal and external corner (-Y)
Picture	





TECHNICAL DATA SHEET

Anodised aluminium

Anodisation is a special finish that improves the look of aluminium profiles. The anodised surface is susceptible to scratches and may become faded, particularly due to the effect of alkaline building products. Contact with fresh cement can cause surface corrosion. Adhesive and grout should always be removed immediately from all visible surfaces using plenty of water. Once oxidation marks have been allowed to appear, it is practically impossible to remove them. Use only cleaning agents with neutral pH that do not scour. Make sure that good room ventilation is provided, especially when joining in combination with high-gloss anodised profiles, in order to achieve fast curing of the joints. This also reduces the alkaline potential of the cement (lowers the pH), thereby preventing any possible damage to the anodised surface.

Note

The suitability for use in terms of mechanical and chemical resistance must always be checked in each individual case. When installing and grouting our metal profiles, the adhesive and grouting materials must be removed immediately with clean water and a soft sponge to prevent damage due to corrosion of the profile. Do not use acidic (e.g. cement fog remover) or alkaline cleaning agents in combination with all metal profiles. Clean with clean water and wipe with a dry linen cloth.

